

Gender and Sexuality Awareness: Best Practices for Engaging Students and Patients

Kristen Mark, PhD, MPH

Joycelyn Elders Endowed Chair for Sexual Health Education

Director of Education, Eli Coleman Institute for Sexual & Gender Health

Director, Center for Women's Health Research

Professor, Department of Family Medicine & Community Health

University of Minnesota Medical School



Eli Coleman Institute for
Sexual and Gender Health

UNIVERSITY OF MINNESOTA

Driven to Discover®



What we'll cover today

- What “expertise” in this area looks like
 - The harms of assumptions
- Some of the content
- How to translate this to preceptors/patients
- Some of the personal
- Questions from you



Who is an expert?

Patients and people are the experts in their own identities

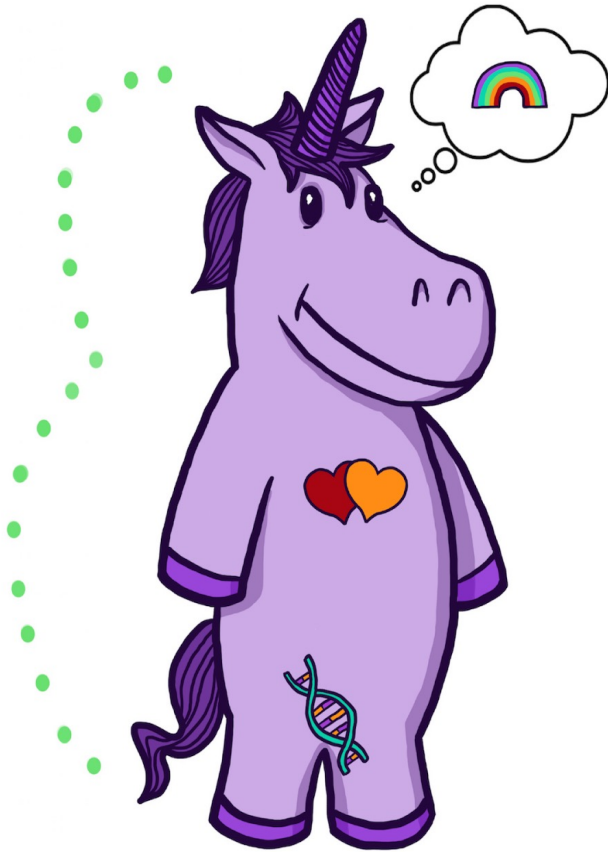
Language changes alllllllll the time ... roll with the change

Clinics need to be welcoming environments for learners and patients, and you may not always get it right, but be open to being humble about this!






The Gender Unicorn

Graphic by:
TSER
Trans Student Educational Resources



Gender Identity

-  Female/Woman/Girl
-  Male/Man/Boy
-  Other Gender(s)

Gender Expression/Presentation

-  Feminine
-  Masculine
-  Other

Sex Assigned at Birth

-  Female
-  Male
-  Other/Intersex

Sexually Attracted To

-  Women
-  Men
-  Other Gender(s)

Romantically/Emotionally Attracted To

-  Women
-  Men
-  Other Gender(s)

To learn more, go to:
www.transstudent.org/gender

Design by Landyn Pan

Use:	Stay Away From:
Gender inclusive pronouns when possible Ex. They/them/their/themselves	Gendered pronouns when unknown or not applicable Ex. He/him or she/her
Gender inclusive language Ex. Congressperson, humankind, firefighter	Sexist language Ex. Congressman, mankind, fireman
Clear, specific language around gender Ex. Cis-gender female, non-binary person	Gender assumptions Ex. Romantic partner vs. husband/wife
Gender neutral identifying language when appropriate Ex. Pregnant people	Gendered identifying language Ex. Women/moms who are pregnant
Specific anatomical language Ex. Bodies with breasts, persons who menstruate	Gendering bodies based on assumptions Ex. Menstruating women



Accessible and personal depictions of trans+ identities for learning



The Transketeers

<https://www.youtube.com/watch?v=Zo5VnKfzEE0>

<https://www.youtube.com/watch?v=bG70shwjRbc>

https://www.youtube.com/watch?v=upX_YWEbg4



WPATH Standards of Care (2022)

World Professional Association for Transgender Health (WPATH) released Standards of Care version 8 in September 2022

Updated standards include additional resources, guidelines for adolescents, allowances for harm reduction and integrate informed consent models of care

Focus of new SOC is on competency of providers, moving **AWAY** from gatekeeper model of transgender health care

<https://www.wpath.org/publications/soc>



Better Care Starts with Knowledge!

Be inclusive as an individual and as a clinic

Speak respectfully

Approach with openness

Educate staff

Treat only the ailment

Ensure privacy



What questions do you have?

get in touch...

kpmark@umn.edu

