



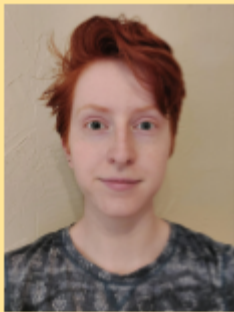
## Twin Cities Campus

### OBST 7500 Obstetrics and Gynecology Clerkship

AY 24-25

#### CONTACT INFORMATION:

**Clerkship Director:** Sabrina Burn, MD  
**Office Hours:** Contact for appointments  
**Phone:** 612-301-3408  
**\*Email:** burn@umn.edu



**Clerkship Coordinator:**  
Heidi Fods  
**\*Email:** fods0008@umn.edu  
**Phone:** 612-624-8003

**SYLLABUS STATEMENT:** The purpose of this document is to provide clarity about clerkship expectations. Consider using this document as a guide for this clerkship, and to provide transparency and accountability for all.

#### CLERKSHIP DESCRIPTION:

The University is a leader in providing innovative, comprehensive and multidisciplinary health care to pregnancy-capable people.

On this rotation, you will acquire skills in providing primary health care to pregnancy-capable people in all stages of life. Although you may not ultimately enter the field of obstetrics and gynecology, you will continue to use the lessons of the clerkship rotation throughout your medical career. It is important that you understand their special health care needs.

The Department of Obstetrics, Gynecology, and Women's Health places medical students at 10 different hospital sites. The number of patients seen, the types of problems encountered, and the number of gynecological and obstetrical procedures done will vary by site and by time of year. Even though the types of experiences you and your classmates have will vary, each site is operating under the same set of goals and objectives set forth by our department.

**Canvas Site:** <https://canvas.umn.edu/courses/319143>

**Clinical Sites:** St. Luke's Hospital-Duluth, Regions Hospital, Hennepin County Medical Center, UMMC Riverside, Fairview Lakes Medical Center, Fairview Center for Women, Haugen OBGYN, Waconia Ridgeview Medical Center, Maple Grove Hospital and CSC, Allina Health Mercy/Blaine

**Prerequisites:** Scientific Foundation Coursework

**Terms offered:** All (not all sites are offered every block, check MEdIS)

**Length of Clerkship:** 4 weeks

#### CLERKSHIP LEARNING OBJECTIVES:

Learning in this clerkship is directed by the following objectives. Upon successful completion of this course, the learner will be able to:

<b>Clerkship Learning Objective</b>	<b>Assessment</b>	<b>Graduation Competencies</b>	<b>Graduation Competencies Subdomain</b>	<b>Entrustable Professional Activities (EPAs)</b>
1. Develop competence in the medical interview and physical examination of pregnancy-capable persons, including performing a breast/chest and pelvic examination.	AM009: Clinical Skills Assessment (CSA) AM010: Observed Patient Encounters	Patient Care, Practice-Based Learning and Improvement, Interpersonal and Communication Skills, Professionalism	PC1 PBL11, PBL12  ICS1, ICS2, ICS3  P1, P2, P4, P6	EPA 1, 5, 7, 12
2. Propose preventative care for women/pregnancy-capable persons and applicable, age-appropriate screening.	AM009: Clinical Skills Assessment (CSA) IM001/RE018: APGO Cases IM019: Problem-Based Learning Cases AM008: NBME Shelf Exam AM010: Observed Patient Encounters AM 002: Quality Improvement Initiative	Patient Care, Knowledge for Practice Practice-Based Learning and Improvement, Professionalism	PC1, PC5 KP1, KP2  PBL13, PBL14  P3	EPA 3, 7, 9
3. Recommend and interpret common diagnostic outcomes based on the physiological changes of pregnancy.	AM009: Clinical Skills Assessment (CSA) IM001/RE018: APGO Cases IM019: Problem-Based Learning Cases AM008: NBME Shelf Exam AM010: Observed Patient Encounters	Patient Care, Knowledge for Practice, Scientific and Clinical Inquiry	PC2 KP2  SCI1	EPA 2, 3, 6, 7, 12
4. Engage in prenatal, intrapartum and postpartum care for birthing persons.	AM009: Clinical Skills Assessment (CSA) IM001/RE018: APGO Cases AM008: NBME Shelf Exam AM010: Observed Patient Encounters	Patient Care, Knowledge for Practice, Practice-Based Learning and Improvement, Interpersonal and Communication Skills	PC3, PC4, PC6 KP1  PBL14  ICS1, ICS2, ICS3	EPA 3, 4, 5, 6, 7, 8, 9, 10, 12
5. Formulate a differential diagnosis and management plan for common, benign gynecologic conditions.	AM009: Clinical Skills Assessment (CSA) IM001/RE018: APGO Cases IM019: Problem-Based Learning Cases AM008: NBME Shelf Exam AM010: Observed	Patient Care, Knowledge for Practice, Practice-Based Learning and Improvement	PC3, PC4, PC5, PC6 KP1, KP2  PBL14, PBL15	EPA 2, 3, 4, 12

	Patient Encounters			
6. Demonstrate perioperative care and familiarity with gynecological procedures.	AM009: Clinical Skills Assessment (CSA) IM001/RE018: APGO Cases AM008: NBME Shelf Exam	Patient Care, Knowledge for Practice, Practice-Based Learning and Improvement	PC2 KP1, KP2  PBLI1, PBLI4, PBLI5	EPA 3, 7, 9, 11, 12
7. Provide culturally competent care for pregnancy-capable persons across the lifespan including diverse ethical and social perspectives.	AM009: Clinical Skills Assessment (CSA) AM010: Observed Patient Encounters AM 002: Quality Improvement Initiative IM 008: Discussion Group	Knowledge for Practice, Interpersonal and Communication Skills, Professionalism, Personal and Professional Development	KP3  ICS3  P1, P2, P3, P4, P6 PPD1, PPD2	EPA 9, 11, 13

*Reference table:*

Institutional Goals & Objectives	Entrustable Professional Activities	Methods of Instruction
<a href="#">UMN Competencies Required for Graduation</a>	Refer to <a href="#">EPAs</a>	Refer to <a href="#">AAMC Categories</a>

**GRADING AND ASSESSMENT:**

The goal is to evaluate individual learning and performance of Clerkship Learning Objectives in this clinical rotation. The grading for this clerkship is Pass/No Pass. Each component is listed and described below as to what is needed in order to pass the clerkship.

**Assessment Grid:**

Assessment	Threshold/Graded	Passing Criteria
Threshold: criteria that needs to be completed Graded: a calculated score at a designated percentage		
Required Clerkship Encounters (RCEs)	Threshold	Observe at least one type for each of the following required clinical conditions: <ul style="list-style-type: none"> <li>Disorders of menstruation</li> <li>Family planning and management</li> <li>Disorders of labor</li> <li>Disorders of pregnancy</li> </ul>
Entrustable Professional Activities (EPAs)	Threshold	Complete 12 EPAs, including EPA 1, averaging 3 EPAs per week
Clinical Skills Assessment (CSA)	Both	<ul style="list-style-type: none"> <li>Complete Mid-Clerkship Feedback (MCF) CSA and Final CSA <ul style="list-style-type: none"> <li>MCF and RCE attestations are included on the Mid-CSA</li> </ul> </li> <li>Score Final CSA rating average at 70% or higher</li> </ul>
Quality Improvement Initiative	Both	Score must be at least 10 out of 20

Problem Based Learning Cases	Threshold	Attend and participate in both sessions
Ethics Discussion	Threshold	Attend and participate in the session
Obstetrics Trauma-Informed Care Session	Threshold	Attend and participate in the session. <i>Participation in related research study is NOT required for clerkship purposes, but greatly appreciated for future learners!</i>
Shelf Exam	Graded	Score 60% or better

***Clerkship remediation policy for Shelf exam or course failure:***

Students who fail to pass the shelf exam with a 60 or better on their first attempt are eligible to retake the shelf exam within 60-90 days from the last day of their course. An incomplete contract must be completed for an exam scheduled beyond a 6 week period. A second failure will result in a course failure.

Students who fail the course:

- If a student fails the OBGYN clerkship **solely** due to not passing the shelf exam in the two attempts given for the clerkship (no clinical or professional concerns), they may have an additional two attempts to pass the shelf exam alone
- If a student fails the OBGYN clerkship secondary to clinic or professional concerns (but passed the shelf exam within 2 attempts) they must repeat the 4 week clinical course alone.
- If a student fails the OBGYN clerkship secondary to both a clinical and/or professional concern AND a shelf failure after two attempts, the student must take the 4 week clinical course and pass the shelf exam in an additional two attempts.

**REQUIRED CLERKSHIP ENCOUNTERS:**

*Expectation:* Successful completion of Required Clerkship Encounters (RCEs) is a requirement for graduation. At the end of each day in the clinic, log RCE experiences in Qualtrics.

*Purpose of RCE:* Upon completion of the core required clerkships, all University of Minnesota Medical Students will have learned about a common set of conditions, procedures, and presenting symptoms. This list was created by an interdisciplinary team made up of clinical faculty, foundational science faculty, and students from both campuses to encompass high yield learning opportunities that any medical student, regardless of speciality, should experience and learn.

*Clerkship Specific RCE List:* To see which of the required RCE conditions, procedures, and presenting symptoms you will be learning about in the clerkship, please visit the RCE page on the clerkship Canvas site.

**CLERKSHIP OUTLINE AND CONTENT:**

Depending on your site, you may be part of a team based approach to medicine working on Labor & Delivery, Gynecologic Surgery, and clinical weekly rotations; or you will be assigned to an individual preceptor. At all sites, students will participate in clinical procedures, deliveries, and surgical operations. **Students will be expected to take call approximately every fourth night, or will be on a float schedule during this rotation.**

All students will meet twice during the four weeks for Problem-Based Learning sessions addressing clinical aspects involved in common obstetric and gynecological problems and for the Ethics session in Obstetrics and Gynecology.

The calendar for OBST 7500 will vary depending on the site. Clinical rotations will be a mix of general clinic, L&D floor work, and Gyn surgical experiences. The following is a sample calendar.

*Sample Clerkship Weekly Calendar*

<b>Week</b>	<i>Monday</i>	<i>Tuesday</i>	<i>Wednesday</i>	<i>Thursday</i>	<i>Friday</i>	<i>Saturday</i>	<i>Sunday</i>
<b>1</b>	Clinic: 7:30-13:00	Clinic: 7:30-13:00	Clinic: 7:30-13:00, ILT in afternoon	Clinic: 7:30-13:00	Clinic: 7:30-13:00		
<b>2</b>	Gyn Surgery: 6:30-18:30, ILT in afternoon	Gyn Surgery: 6:30-18:30, didactics	Gyn Surgery: 6:30-18:30	Gyn Surgery: 6:30-18:30	Gyn Surgery: 6:30-18:30		
<b>3</b>	L&D Day Float: 6:30-18:30	L&D Day Float: 6:30-18:30, didactics	L&D Day Float: 6:30-18:30	L&D Day Float: 6:30-18:30	L&D Day Float: 6:30-18:30		L&D Night Float: 18:00-8:00
<b>4</b>	L&D Night Float: 18:00-8:00	L&D Night Float: 18:00-8:00, didactics	L&D Night Float: 18:00-8:00	L&D Night Float: 18:00-8:00			

*Mid-Clerkship Review:* Week 2 of rotation. Must be done face-to-face or via Zoom. You may choose either a resident, faculty or site director to complete your mid-clerkship review. Be sure to include a review of your EPA and RCE dashboards. (**Reminder:** Students are required to complete 12 EPAs, including EPA 1 and 2, within the 4 week clerkship)

*Final Clerkship Review (Final CSA):* Week 4 of rotation. Must be face-to-face with your Site Director. If time is not set in your schedule, please set the time with your site director during week 1 so it is on their calendar. EPAs should be reviewed at the time of the final CSA assessment.

*Entrustable Professional Activities (EPAs):* For AY 24/25, outside of EPA 1, students will not be required to complete specific EPAs for each clerkship. Instead, students will be provided opportunities to demonstrate specific EPAs in each clerkship. And, students will continue to be required to submit, on average, 3 EPA supervision levels per week. The widespread opportunities to demonstrate EPAs, paired with required clinical coaching, will allow students to develop personalized plans for gathering EPA supervision levels to support entrustment by their Clinical Competency Committee.

*Patient History & Physical Exam:* For the OB/GYN Clerkship our expectation is that you will develop competence in eliciting a complete OB/GYN history and develop skills in completing sensitive pelvic and breast exams.

*Assignment List (& Description)*

- 1. APGO Cases (Independent Learning)** - There are 31 modules that correlate with the RCE diagnoses/conditions/procedures we are responsible for teaching you in the OB/GYN Clerkship. We have listed textbook reading, video learning, applicable articles and case-based learning opportunities for each

module to help increase your knowledge of the specific condition or procedure. You may use this material for your independent learning.

2. **Problem-Based Learning Case** - Four gynecological and four obstetric cases with questions will be reviewed and discussed in order to develop communication, problem-solving skills, and clinical medicine knowledge. Pass/Fail assessment is determined by the PBL instructor's review and evaluation based on attendance, participation, and preparedness. **Sessions are mandatory.** A missed session due to an excused absence will be allowed a make up by submitting answers to the PBL questions for that session within one week of missed session.
3. **Ethics Discussion - This session is mandatory.** A missed session due to an excused absence will be allowed a make up through written interpretation of case(s). Prepare for discussion by reading the article posted on Canvas.
4. **Obstetric Trauma-Informed Care Session - This session is mandatory.** A missed session due to an excused absence will be allowed a make up through written interpretation of the case. Prepare for the session by accessing the pocket guide for trauma history screening posted on Canvas to use during the interactive component of the session. While participation in the curriculum is mandatory, participating in the related research study of the curriculum is NOT, but appreciated for future learners' benefit.
5. **Quality Improvement Initiative** - Cervical cancer screening and breast cancer screening are two essential components of preventive care in women's health. During your clinical OB/GYN experience, you are to identify 2 patients who are not up-to-date or due for cervical cancer screening and breast cancer screening, respectively. You will be evaluated on your correct interpretation of age-based screening recommendations, description of the screening recommendations, and ability to translate the screening guidelines into effective patient education.
6. **Shelf Exam** - A passing shelf exam score for this clerkship is 60% and the purpose is to provide an objective assessment of learning over the clerkship.

*Clerkship Resources:* See Canvas course "Resources" for most up to date list.

**COURSE GUIDELINES AND POLICIES:**

<b>All Medical Student Policies</b>	<a href="#">University of Minnesota Medical Student Policies</a>
<b>Attendance and Excused Absences</b>	<a href="#">Attendance Requirements and Excused Absences</a>
<b>Disability Resources</b>	<a href="#">Medical Students with Disabilities</a>
<b>Duty Hours</b>	<a href="#">Duty Hours, Years 3 &amp; 4</a>
<b>Grades and Incomplete Contracts</b>	<a href="#">Grading &amp; Grade Appeals</a>
<b>Mistreatment</b>	<a href="#">Student Mistreatment Policy</a>
<b>Professionalism</b>	<a href="#">Student Conduct Code</a>
<b>Remediation</b>	<a href="#">Scholastic Standing Committees</a>
<b>Syllabus Change</b>	Except for changes that substantially affect implementation of the evaluation (grading) statement, this syllabus is a guide for the course

	and is subject to change with advance notice.
--	---